

**GENERAL PLUMBING NOTES:**

- LOCATION AND SIZES OF ALL EXISTING SERVICES ARE APPROXIMATE. VERIFY ALL UTILITIES PRIOR TO COMMENCING WORK.
- FOR EXACT LOCATION OF PLUMBING FIXTURES, DRAINS AND EQUIPMENT SEE ARCHITECTURAL DRAWINGS.
- ALL DOMESTIC WATER AND VENT PIPING SHOWN TO BE RUN ABOVE CEILING UNLESS OTHERWISE NOTED.
- ALL SANITARY PIPING SHOWN TO BE RUN BELOW FLOOR UNLESS OTHERWISE NOTED.
- ENTIRE INSTALLATION INCLUDING MATERIALS, EQUIPMENT AND WORKMANSHIP SHALL CONFORM WITH ALL APPLICABLE LAWS, CODES AND REGULATIONS OF MUNICIPAL, STATE AND FEDERAL AUTHORITIES, ALSO THE PHILADELPHIA PLUMBING CODE 2004, INTERNATIONAL BUILDING CODE 2009, AND OTHER REGULATORY BODIES HAVING JURISDICTION OVER THE CLASS OF WORK.
- THE CONTRACTOR SHALL MAKE TESTS FOR ACCEPTANCE AND APPROVAL AS REQUIRED BY THE CODE. REQUIRED TESTS SHALL BE PERFORMED IN THE PRESENCE OF OWNER'S REPRESENTATIVE UNLESS WAIVED IN WRITING.
- THE CONTRACTOR SHALL FIELD COORDINATE THE WORK WITH THAT OF ALL OTHER TRADES.
- ALL DOMESTIC WATER PIPING SHALL BE INSULATED AS REQUIRED.
- DOMESTIC WATER PIPING MATERIAL: ASTM B88 TYPE L OR M COPPER TUBE WITH WROUGHT OR CAST COPPER FITTINGS AND LEAD-FREE SOLDERED JOINTS. INSTALL DOMESTIC WATER PIPING LEVEL WITHOUT PITCH AND PLUMB.
- DRAIN, WASTE, STORM, AND VENT PIPING MATERIAL: FOR BELOW GROUND SOIL, WASTE AND VENT PIPING SHOULD BE SERVICE WEIGHT HUB AND SPIGOT CAST IRON CONFORMING TO ASTM A74, WITH LEAD AND OAKUM JOINTS AS ALLOWED BY PHILADELPHIA PLUMBING CODE; FOR ABOVE GROUND SOIL, WASTE AND VENT PIPING SHOULD BE HUBLESS CAST-IRON.
- ANY ITEM OF MATERIALS NOT INDICATED ON THE DRAWINGS OR NOT SPECIFIED, AND WHICH ARE REQUIRED FOR THE COMPLETE INSTALLATION OF ANY PART OF THE WORK DESCRIBED, SHALL BE FURNISHED AS CODE REQUIRED.
- INSTALL CLEANOUT AT OR NEAR THE BOTTOM OF SANITARY/WASTE STACK.
- PROVIDE PROPER ACCESS PANELS AS SPECIFIED IN WALLS AND CEILINGS FOR ANY EQUIPMENT, DEVICES, VALVES, SHOCK ABSORBERS, TRAP PRIMERS, CLEANOUTS ETC. REQUIRING ACCESS.

**ABBREVIATIONS:**

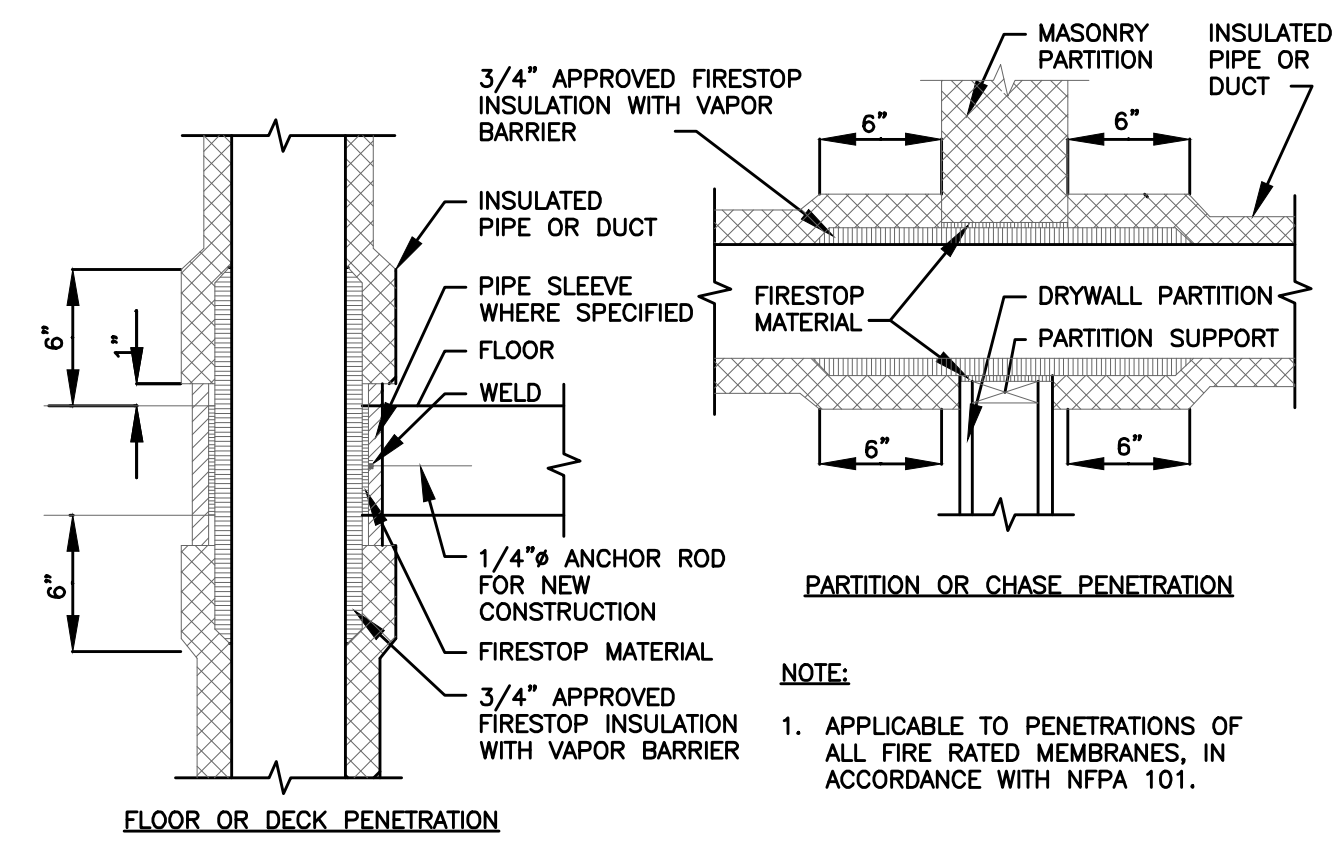
- ABV ABOVE
- ABV CLG ABOVE CEILING
- BFP BELOW FLOOR
- BFP BACK FLOW PREVENTOR
- CD CONDENSATE
- (F/G/W)CO (FLOOR/GROUND/WALL) CLEAN OUT
- CW COLD WATER
- DN DOWN
- EMH ELECTRIC WATER HEATER
- FU FRESH AIR INTAKE
- FU FIXTURE UNITS
- HWH GAS WATER HEATER
- S SANITARY
- ST STORM
- V VENT
- V.T.R. VENT THROUGH ROOF
- W WASTE
- V.I.F. VERIFIED IN FIELD

**SYMBOLS:**

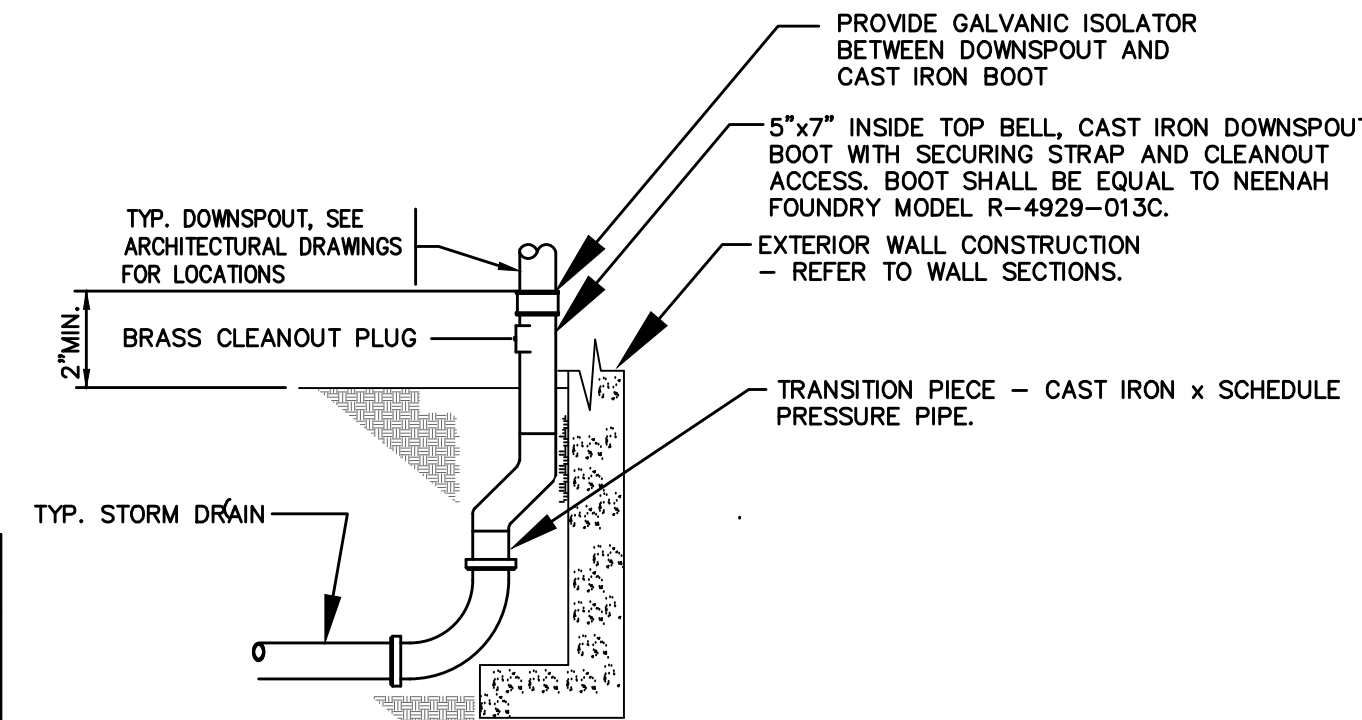
- CHECK VALVE
- GATE VALVE
- SANITARY PIPING
- SANITARY VENT PIPING
- BALL VALVE
- CLEANOUT
- DOMESTIC COLD WATER (CW)
- DOMESTIC HOT WATER (HW)

GAS WATER HEATER SCHEDULE							HWH	
No.	Gallon Capacity	Fuel	Input (MBH)	Output (MBH)	First Hour Rating @90F (GPH)	Flue (in.)	Manufacturer & Model No.	Remarks
1	100	GAS	58	-	256	3	AO SMITH BTH 199(A)	-

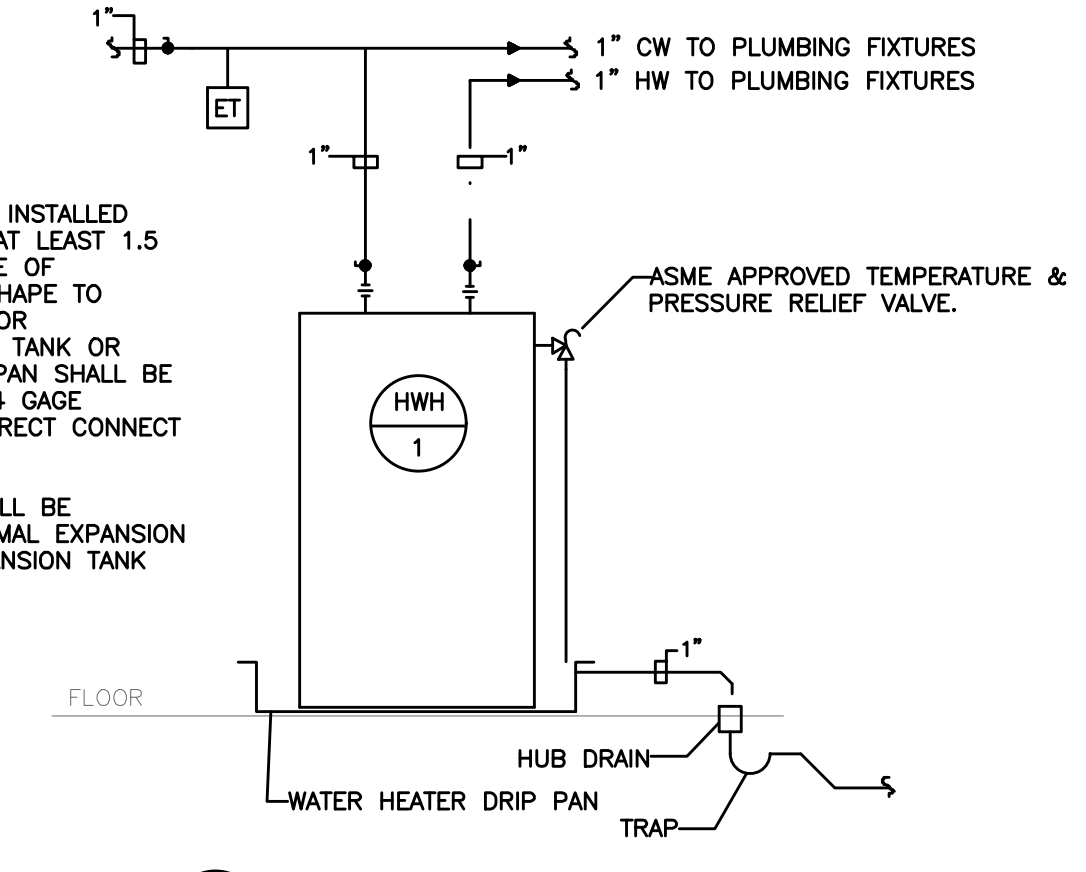
PLUMBING SPECIALTIES SCHEDULE			
NO.	FIXTURE	CW	MANUFACTURER AND BASIS OF DESIGN
BFP	BACK FLOW PREVENTOR	1-1/2"	WATTS #909-QT
G.I.	GREASE INTERCEPTOR	-	THERMACO BIG DIPPER W-200-IS , 18.14 KG, 20 GPM
ET	EXPANSION TANK	-	AMTROL THERM-X-TROL COMMERCIAL ASME SERIES MODEL ST-12-C EXPANSION TANK



**3 PIPE PENETRATION OF FIRE/SMOKE BARRIERS**  
SCALE: NONE

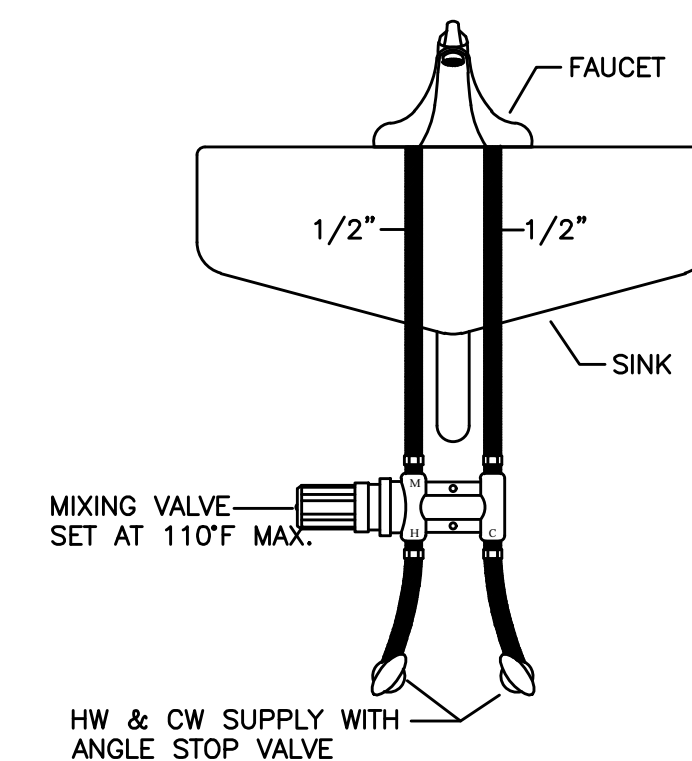


**2 DOWNSPOUT BOOT AT NEW ADDITION**  
SCALE: NONE



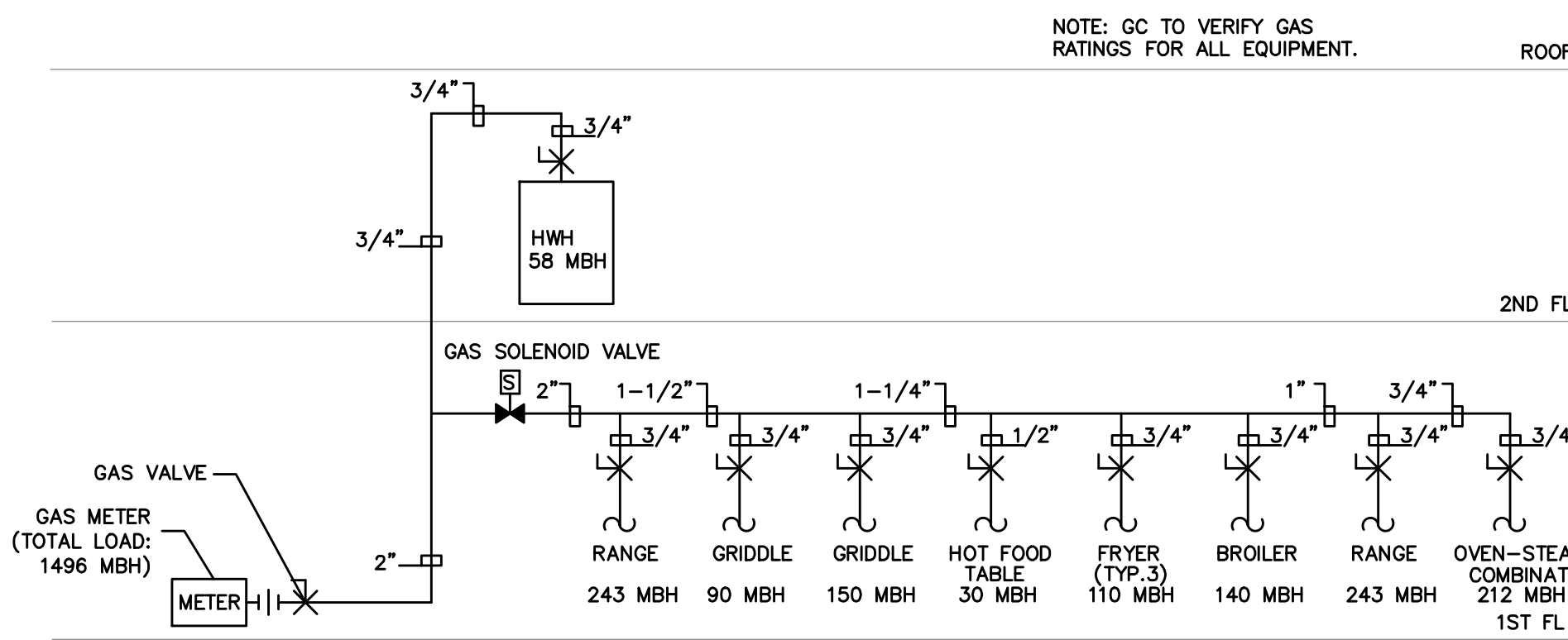
**5 WATER HEATER DRIP PAN DETAIL**  
SCALE: NONE

PLUMBING FIXTURE RUNOUT SCHEDULE					
Fixture	Symbol	Waste	Cold Water	Hot Water	MANUFACTURER & MODEL NUMBER
FLOOR SINK	FS	3"	-	-	MIFAB SERIES #F1100-C-DD
LAVATORY	LAV	1-1/2"	3/4"	3/4"	SINK: BADELOTT/ STONE RESIN WALL MOUNTED SINK/ WT-07 FAUCET: SLOAN/ SF 2350- ELECTRONIC HAND WASHING FAUCET
LAVATORY - ADA ACCESSIBLE	LAV-2	1-1/2"	3/4"	3/4"	SINK: KOHLER / BRYANT OVAL/ K-2699-40/ WHITE FAUCET: SLOAN/ SF 2350- ELECTRONIC HAND WASHING FAUCET
WATER CLOSET	WC	3"	3/4"	-	AMERICAN STANDARD/MADERA, 3461.660/ WHITE (SEAT: AMERICAN STANDARD/ 5901.00/ WHITE)
HUB DRAIN	HD	2"	-	-	WATTS FD-300-DD
FLOOR DRAIN	FD	3"	-	-	ZURN FD2201
NON-FREEZE WALL HYDRANT W/ COLD WATER	NFWH-1	-	1/2"	-	WOODFORD MB24-1/2
NON-FREEZE WALL HYDRANT W/ COLD AND HOT WATER	NFWH-2	-	1/2"	1/2"	WOODFORD B22CP-12

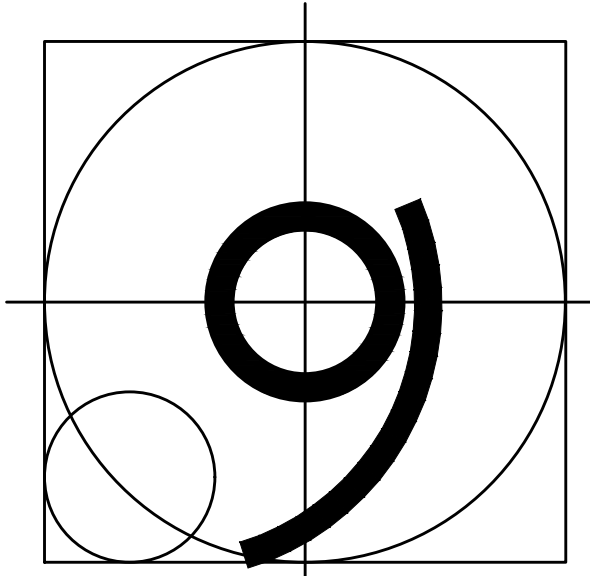


**4 MIXING VALVE UNDER LAVATORY & SINKS**  
SCALE: NONE

PLUMBING SCHEDULE (BY KITCHEN CONSULTANT)									
Item No	Qty	Equipment Category	Hot Water Size (in)	Cold Water Size (in)	Direct Drain Size (in)	Indir Drain Size (in)	Cops Size (in)	MBTUH	Manufacturer and Model Number
1	1	Ice Maker w/o Bin		0.375		0.5			Manitowoc Ice IY-1004A
2	1	Bin, Ice				0.75			Manitowoc Ice B-970
3	1	Filter System, Icemaker		0.75		0.5			Everpure EV9324-02
4	2	Sink, Hand, Wall Mount	0.5	0.5	1.5				Eagle Group/Metal Masters HSA-10-F
5	1	Soiled Dishtable w/ Rack Shelf				2			Fabricate Custom
7	1	Pre-Rinse Faucet, Wall Mount	0.5	0.5					T & S Brass B-0133-B
8	1	Disposer, Garbage		0.5	2				In-Sink-Erator SS-200-18
9	1	Warewasher, Door Type, High Temp	0.75			1.5			Hobart US Foodservice AM15-2
14	1	Sink, Scullery, 3 Compartments	0.5	0.5		1.5			Fabricate Custom
17	2	Med Temp Evaporator Coil					1		American Panel Custom
19	2	Low Temp Evaporator Coil					1		American Panel Custom
29	1	Dish Cabinet w/ Hand Sink	0.5	0.5		1.5			Fabricate Custom
30	1	Work Counter w/ Sink	0.5	0.5		2			Fabricate Custom
39	1	Table, Hot Food		0.5		1.5	0.5	30	Fabricate Steam Table w/ Steam Box
40	2	Drop-in, Hot Wells				0.5			Wells SS-10ULTD
42	1	Sink, Scullery, 2 Compartments	0.5	0.5		2			Eagle Group/Metal Masters 314-16-2-18
45	2	Range, Restaurant, Gas					0.75	243	Southbend 4361D
45A/ 52	1	Range, Restaurant, Gas w/ Salamander					0.75	283	Southbend 4361D
46	1	Broiler, Under-Fired, Gas, Counter					0.75	140	MagiKitch'n CM-RMB-636
48	3	Fryer, Deep Fat, Gas					0.75	110	Pitco SG14S
49	1	Griddle, Gas					0.75	90	Anets A30X36G
50	1	Griddle, Gas					0.75	150	Anets A30X60G
54	1	Oven-Steamer, Combination, Gas		0.75		2	0.75	212	RATIONAL USA SCCWE 62 G/SCCWE 62 G
54.1	1	Water Filter		0.75					
58.2	1	Med Temp Evaporator Coil						1	American Panel Custom
62	1	Floor Trough			4				Eagle Group/Metal Masters FT-1572-SG
63	1	Drop-in, Drainers				.5			Perlick RDP12X36
65	1	Underbar Hand Sink	.5	.5	1.5				Perlick TS12
67	1	Ice Cream Dipping Cabinet		.5	0.5				Master Built DD-46CG
68	1	Under Bar Drain Board			1.5				Perlick TS12HS
69	1	Underbar Ice Chest			0.5				Perlick TS24IC10
70	1	Glasswasher	0.5	0.5		2			Jackson WWS R-24
77	1	Bag-In-Box Soda System		0.5					By Vendor Custom
79	2	Floor Trough			4				Eagle Group/Metal Masters ASFT-12120-SG
80	2	Sink, Drop-In	0.5	0.5	1.5				Eagle Group/Metal Masters SR10-14-5-1
81	2	Coffee Maker, Automatic		.5					Bunn-O-Matic 12950.0213
82	2	Dispenser, Hot Powdered Drink		0.375					Bunn-O-Matic SET00.0197
83	2	Dispenser, Beverage/Non-Carbonated		.5					Bunn-O-Matic 37300.0000
85	2	Coffee/Tea Maker		.5					Bunn-O-Matic 36700.0009
86	2	Coffee Maker, Airpot, Automatic		.5					Bunn-O-Matic 34600.0002
88	1	Sink, Drop-In	0.5	0.5		2			Eagle Group/Metal Masters SR14-16-9.5-3
90	1	Floor Trough			4				Advance Tabco FTG-1884



**1 GAS PIPING RISER DIAGRAM**  
SCALE: NONE



**Group G**

123 Chestnut Street, Suite 200  
Philadelphia, PA 19106  
Tel: 215.351.9500  
Fax: 215.351.9233  
E-mail: info@groupg.net  
© 2016 Group G LLC

CONSULTANT:  
**HUTEC ENGINEERING**  
HUTEC.ENG@GMAIL.COM  
T 267.243.5125  
417 N. 8TH ST, SUITE 301,  
PHILADELPHIA, PA 19123

**TROLLEY CAR DINER INC.**

6825 Germantown Avenue  
Philadelphia, PA 19119

**TROLLEY CAR STATION**

3940 Baltimore Avenue  
Philadelphia, PA 19104

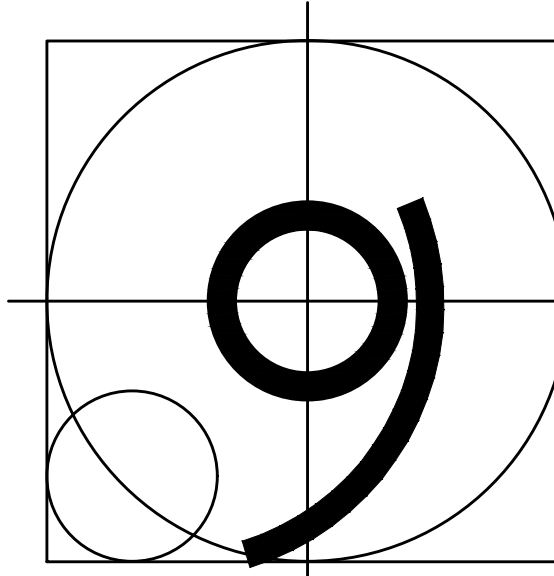
REVISION	DATE
ADDENDUM NO. 1	10.28.2016
MISCELLANEA	11.07.2016

Project no: 250.1  
Date: April 18, 2016  
Sheet: of

**PLUMBING COVER SHEET**

**P1**

Preliminary: Not for Construction



# Group G

123 Chestnut Street, Suite 200  
 Philadelphia, PA 19106  
 Tel: 215.351.9500  
 Fax: 215.351.9233  
 E-mail: info@groupg.net  
 © 2016 Group G LLC

CONSULTANT:  
**HUTEC ENGINEERING**  
 HUTEC.ENG@GMAIL.COM  
 T 267 243 5125  
 417 N. 8TH ST, SUITE 301,  
 PHILADELPHIA, PA 19123

## TROLLEY CAR DINER INC.

6825 Germantown Avenue  
 Philadelphia, PA 19119

## TROLLEY CAR STATION

3940 Baltimore Avenue  
 Philadelphia, PA 19104

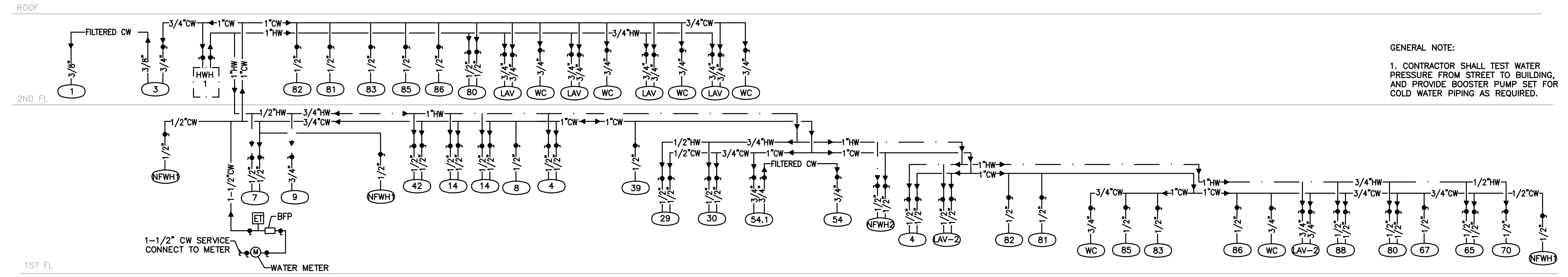
REVISION	DATE
ADDENDUM NO. 1	10.28.2016
MISCELLANEA	11.07.2016

Project no: 250.1  
 Date: April 18, 2016  
 Sheet: of

### PLUMBING RISER DIAGRAM

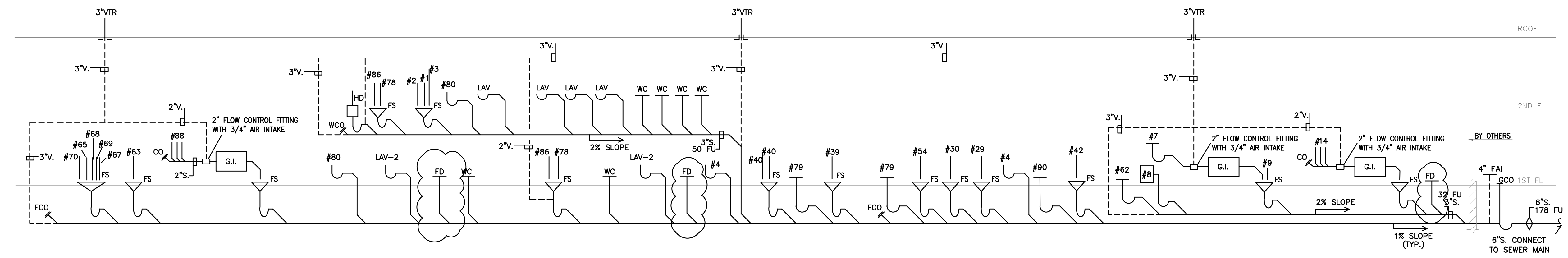
# P2

Preliminary: Not for Construction



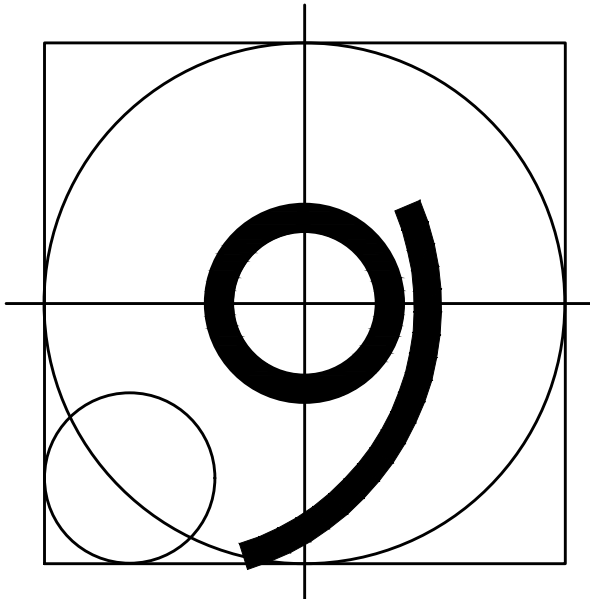
GENERAL NOTE:  
 1. CONTRACTOR SHALL TEST WATER PRESSURE FROM STREET TO BUILDING, AND PROVIDE BOOSTER PUMP SET FOR COLD WATER PIPING AS REQUIRED.

1 DOMESTIC WATER PIPING RISER DIAGRAM  
 SCALE: NONE



2 SANITARY PIPING RISER DIAGRAM  
 SCALE: NONE

1/8" = 1'-0"  
 1/4" = 1'-0"  
 1/2" = 1'-0"  
 3/4" = 1'-0"  
 1" = 1'-0"  
 1 1/2" = 1'-0"  
 2" = 1'-0"  
 3" = 1'-0"  
 4" = 1'-0"  
 6" = 1'-0"  
 12" = 1'-0"  
 24" = 1'-0"  
 © Group G LLC. Group G LLC expressly reserves its common law copyright and other property rights in these drawing documents. These drawings are not to be reproduced nor assigned to a third party without the express written consent of Group G LLC.



# Group G

123 Chestnut Street, Suite 200  
Philadelphia, PA 19106  
Tel: 215.351.9500  
Fax: 215.351.9233  
E-mail: info@groupg.net  
© 2016 Group G LLC

CONTRIBUTOR:  
**HUTEC ENGINEERING**  
HUTEC.ENG@GMAIL.COM  
T 267.243.5125  
417 N. 8TH ST, SUITE 301,  
PHILADELPHIA, PA 19123

## TROLLEY CAR DINER INC.

6825 Germantown Avenue  
Philadelphia, PA 19119

## TROLLEY CAR STATION

3940 Baltimore Avenue  
Philadelphia, PA 19104

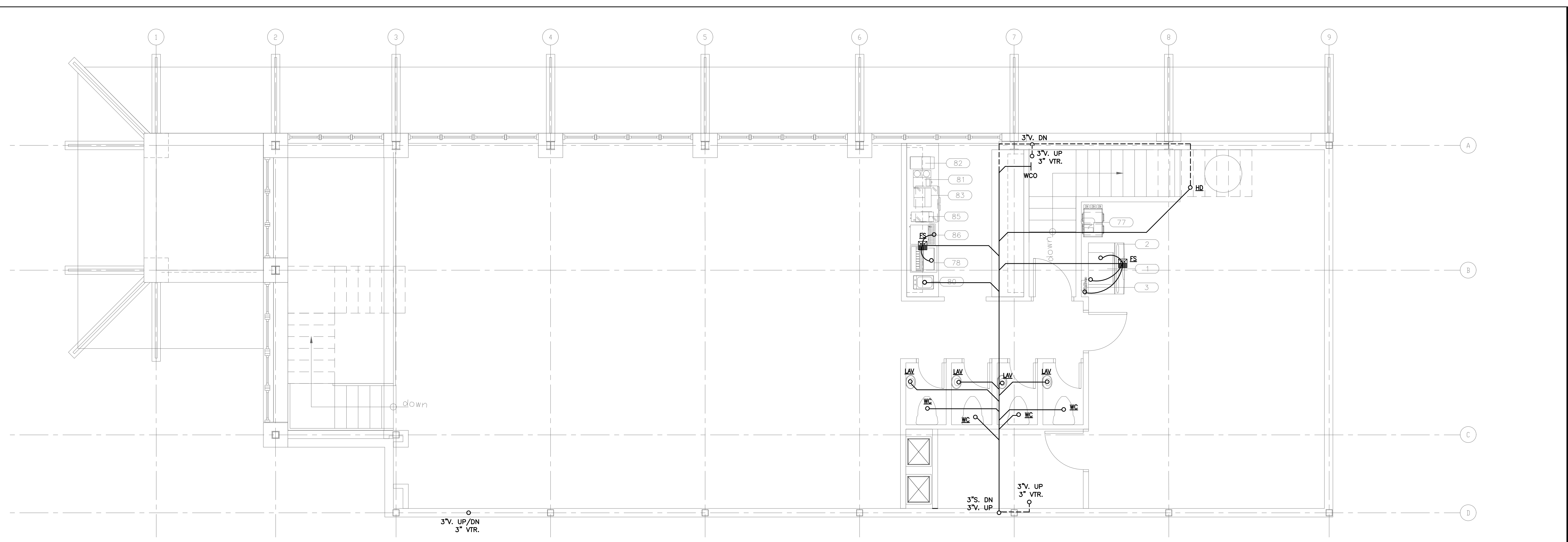
REVISION	DATE
ADDENDUM NO. 1	10.28.2016
MISCELLANEA	11.07.2016

Project no: 250.1  
Date: April 18, 2016  
Sheet: of

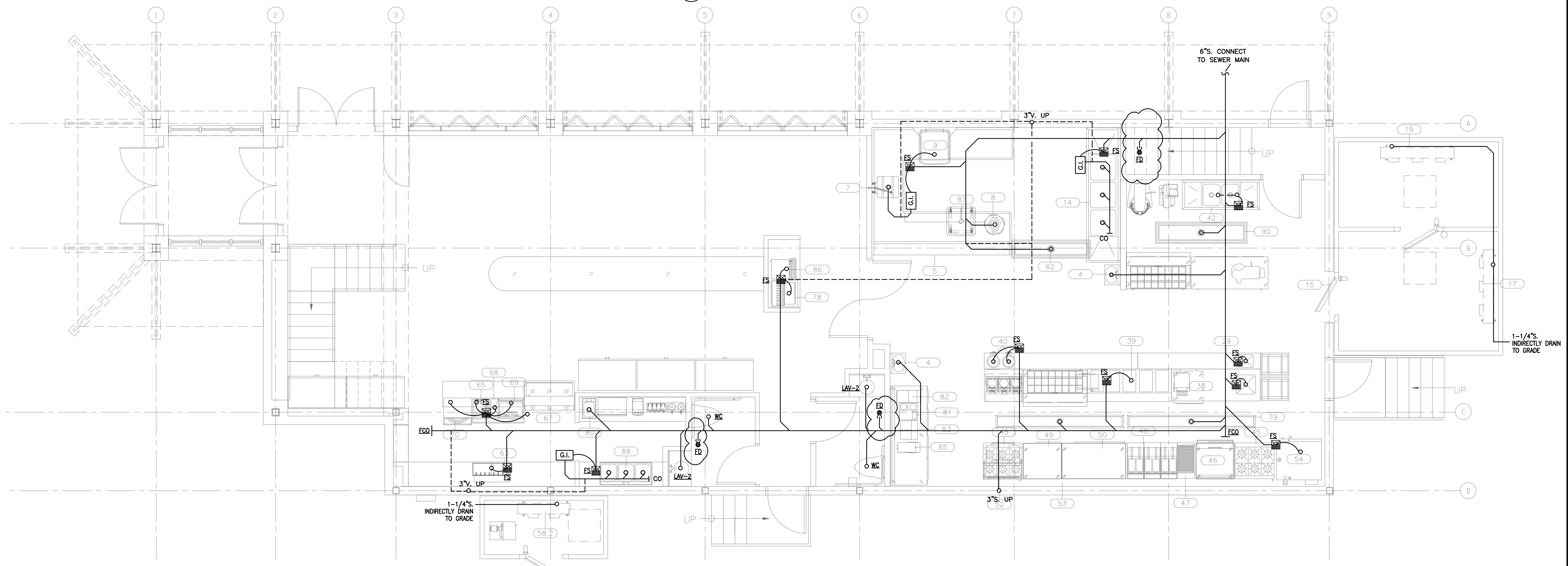
### SANITARY PIPING PLAN

# P3

Preliminary: Not for Construction



**2 2ND FLOOR SANITARY PIPING PLAN**  
P3 SCALE: 1/4"=1'-0"



**1 1ST FLOOR SANITARY PIPING PLAN**  
P3 SCALE: 1/4"=1'-0"

0 1 2 3 4 6 8 12 16 24  
1/8" = 1'-0"

0 1 2 3 4 6 8 12 16 24  
1/4" = 1'-0"

0 1 2 3 4 6 8 12 16 24  
3/4" = 1'-0"

0 1 2 3 4 6 8 12 16 24  
1-1/2" = 1'-0"

0 1 2 3 4 6 8 12 16 24  
3" = 1'-0"

© Group G LLC. Group G LLC expressly reserves its common law copyright and other property rights in these drawing documents. These drawings are not to be reproduced nor assigned to a third party without the express written consent of Group G LLC.